



# Reset Password And Login To AMIS Account Securely

Powered by [guidde](#)

## AMIS: Login and Forgot Password



This tutorial. We are going to learn about how to log into Avis and how to reset the password using the forgot password feature on Avis.

Go to [localhost](#)

## 01 Introduction

Before you start ensure that your email address has been registered by the administrator And you have activated your account, through the link that is sent to your email and you received a temporary password from Amy's. Basically, you have to have an icon in Amy's. You know, if we need to log in

**AMIS** [Home](#) [Services](#) [About](#) [Features](#)

# Agriculture Management Information System

A comprehensive government platform integrating NASP, MTDP, and Corporate Plans for strategic agricultural planning, workplan management, activity implementation, performance evaluation, and development coordination across Papua New Guinea.

[Learn More](#) [Our Services](#)

**Login**

Email

Password

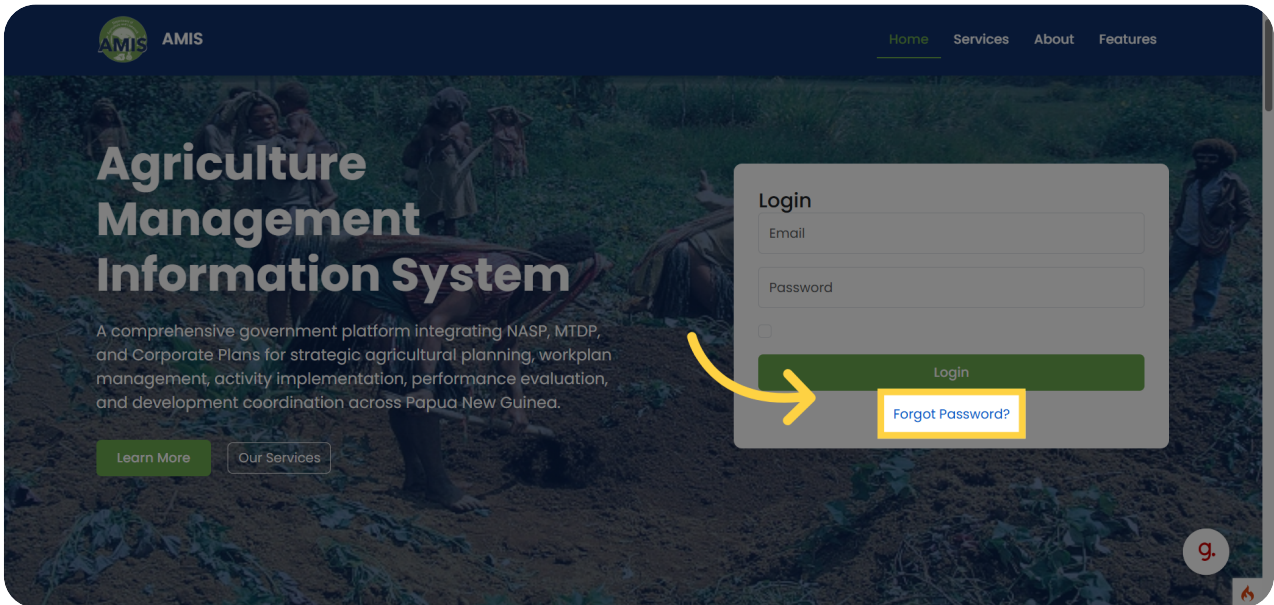
[Login](#)

[Forgot Password?](#)

[g.](#)

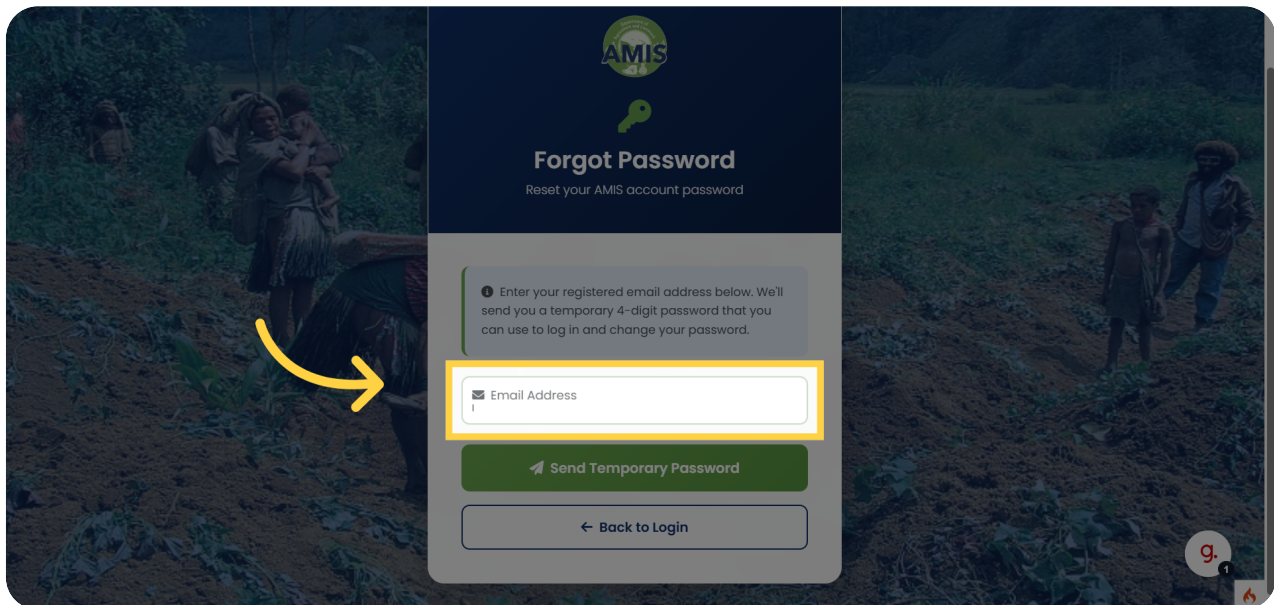
## 02 Click Forgot Password Link

If, you know your account email address and your password, you can just log in. Directly into Amy's. But if you forget the password, You can click on the forgot password.



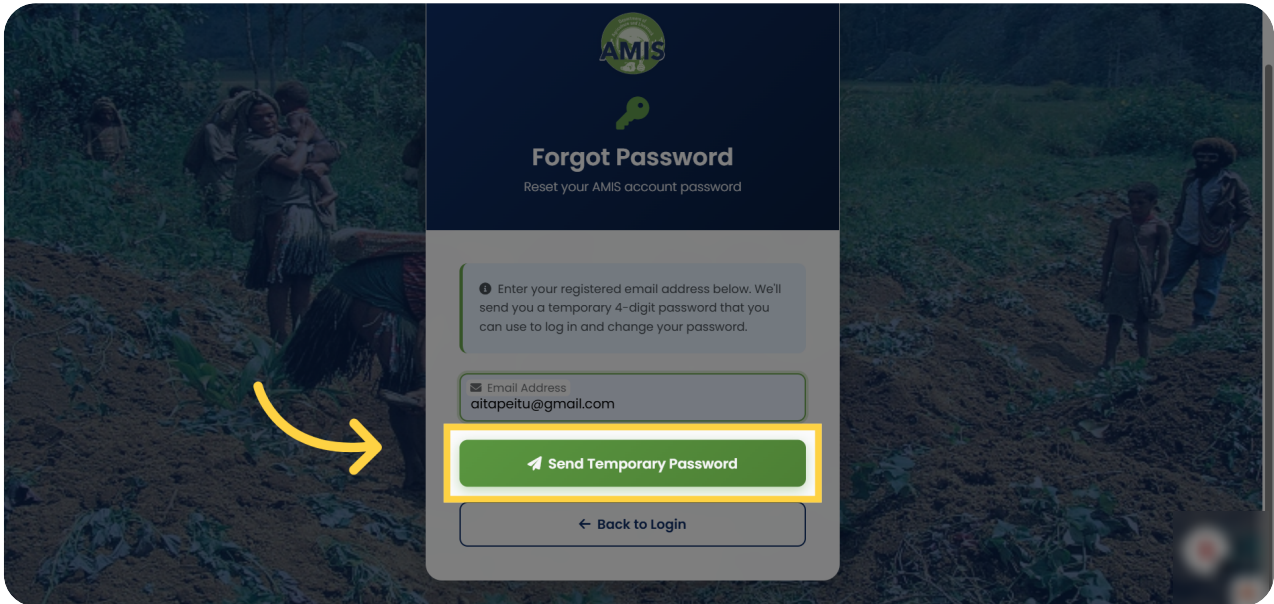
### 03 Select Email Address Option

And then three sets Sosa, enter your email address. That is your registered email address.



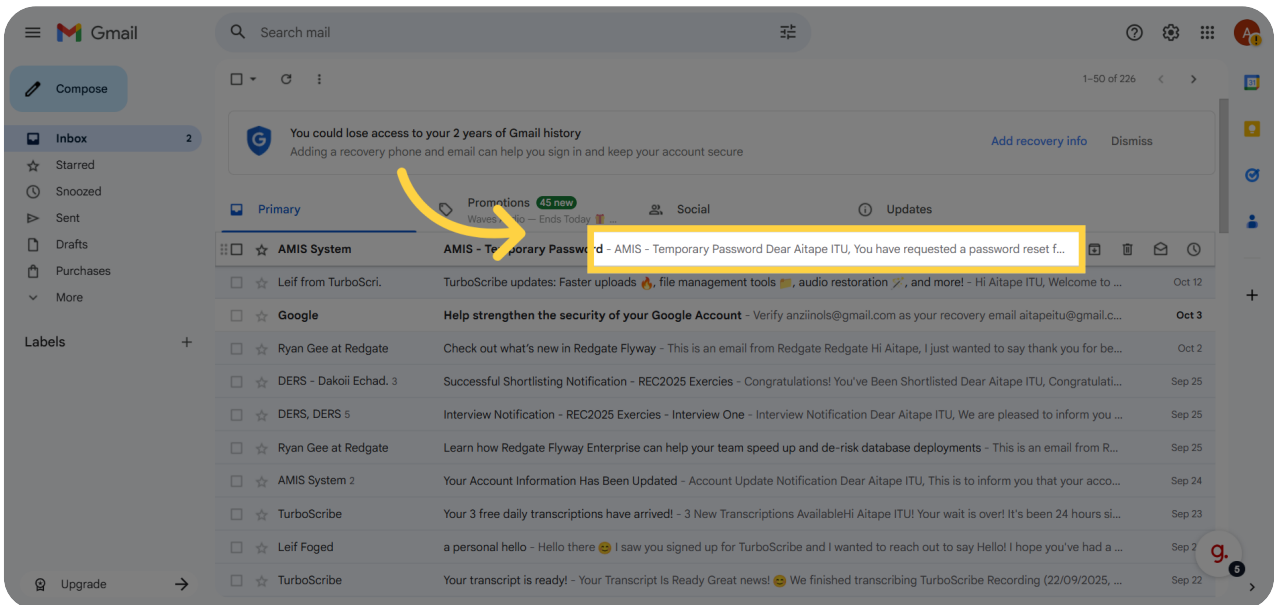
## 04 Send Temporary Password Request

Click the send temporary password button.



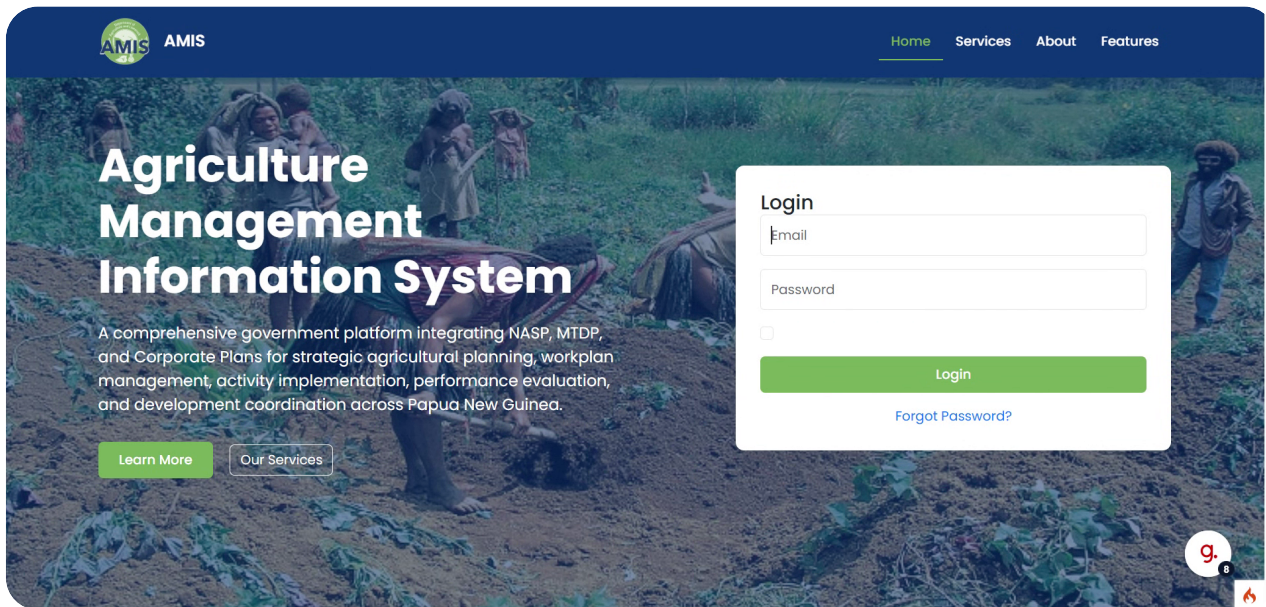
## 05 View Temporary Password Details

You will receive an email from Amy sweeter, temporary password.



## 06 Enter Your Email Address Again

Now, you can enter your registered email and your temporary password login. Later, you can reset the password. In your profile page.



The screenshot displays the AMIS (Agriculture Management Information System) website. The header includes the AMIS logo and navigation links for Home, Services, About, and Features. The main content area features a large background image of farmers working in a field. Overlaid on this is a white login form with the following elements:

- AMIS AMIS** logo in the top left.
- Navigation menu: [Home](#), [Services](#), [About](#), [Features](#).
- Agriculture Management Information System** title.
- Subtext: "A comprehensive government platform integrating NASP, MTPD, and Corporate Plans for strategic agricultural planning, workplan management, activity implementation, performance evaluation, and development coordination across Papua New Guinea."
- Buttons: [Learn More](#) and [Our Services](#).
- Login** form with fields for "Email" and "Password".
- A checkbox for "Remember Me".
- A green **Login** button.
- A [Forgot Password?](#) link.
- A small circular logo with the number "9" and a flame icon in the bottom right corner.

You have successfully reset your AMIS password using the temporary password sent to your email and logged into your account. To ensure security, consider updating your password after logging in. For further assistance, explore additional AMIS account management features.

Powered by [guidde](#)